

PRECISION at its Finest, REALABILITY at its Core

Expertise & Capabilities



ABOUT US

OCS Engineering & Construction (India) Pvt. Ltd. is a rapidly growing manufacturer of ASME/EN Pressure Vessels, Heat Exchangers, storage tanks, and specialty fabricated equipment made from stainless steel and carbon steel. In addition to our manufacturing capabilities, we also offer comprehensive site fabrication and erection services. Our company was established in **2017** in Coimbatore, India by Mr.K.Subramanian, a seasoned professional with an impressive **30 years** of experience in the fabrication business and a proven track record of successful worldwide installations. Under his visionary leadership, OCS Engineering & Construction (India) Pvt Ltd strives for excellence in everything we do.

Today, **OCS Engineering & Construction (India) Pvt. Ltd.** has emerged to be a reliable single-source provider of Custom-Engineered components and end-to-end solutions for various industries. We constantly strive to stay ahead of industry and technological trends to ensure our clients benefit from the latest innovations.

Infrastructure

Our **ISO 9001:2015** Certified **state-of-the-art facility** spreads over a land area of **90,000 sq.ft.**, strategically located in the prime vicinity of Industrial hub Coimbatore City in India. It is equipped with hi-tech machinery & tools to produce premium quality products.

Focus Sector

- Oil & Gas,
- Petro Chemicals & Refineries
- Power
- Defence
- Marine
- Food Industry
- Process Industry
- Industrial Equipment Manufacturers



Why OCS Engineering



Skilled Workforce:

100+ resources at factory with experience in executing large and complex projects



Proven Expertise:

Successfully executed large-scale turnkey projects and manufacturing solutions.



On-Time Delivery:

Track record of delivering every projects on time, ensuring your operations stay on schedule.



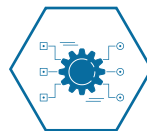
Certifications:

ISO 9001:2015, ASME U Stamp, NB, DNV (Maritime) AOM & IBR and other relevant certifications, demonstrating our commitment Global specifications & Compliance.



Site Services:

100 + highly experienced workforce for on-site installations & Support.



End-to-end Custom-Engineered Solutions:

From **design to site installation** - all under one roof.



Effective procurement:

Supply Chain Management with global sourcing expertise

Expertise & Capabilities

‘Precision in every detail , satisfaction in every project’

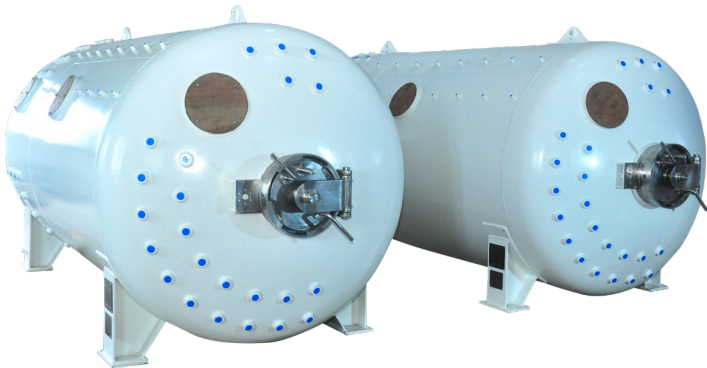
Our portfolio encompasses a wide range of meticulously crafted solutions from small parts to turnkey projects. With a steadfast commitment to quality and compliance, we deliver dependable results, all backed by third-party certifications, proven track records, and the expertise to transform your vision into reality.

Choose us for solutions that elevate efficiency, enhance filtration, optimize material handling, and guarantee safety while meeting industry demands.



Air Dive Chambers (50MSW)

Our air dive chambers are expertly crafted from high-quality materials and trusted across diverse sectors for their safety and reliability in underwater operations.



Standard	ASME BPVC VIII DIV 1 / PVHO-1-2019
Class Rules	DNV - OS - E402 / LR Rules
Material	SA 516 Gr 70 / P 355 NL1 NL2 / SA 106 GR B / SA 333 Gr 6 / SA 105 / SA 350 LF 2 / stainless steel
Design Pressure	5 Bar G
Temp	- 10 to 55 Deg C
Dimensions	I/D 1800 X OAL 4500 MM
Manway	750 MM DIA 350 LF2 Forging with SS Overlay
Medical Lock	SA 182 F 316L
View Port	150MM - 4 Nos
Weight	3500 Kg Approx
Certifications	U Stamp , DNV / LR CLASS
Surface Finish	3 Coat Marine Epoxy System suitable to PVHO

24 Man HRF Chamber

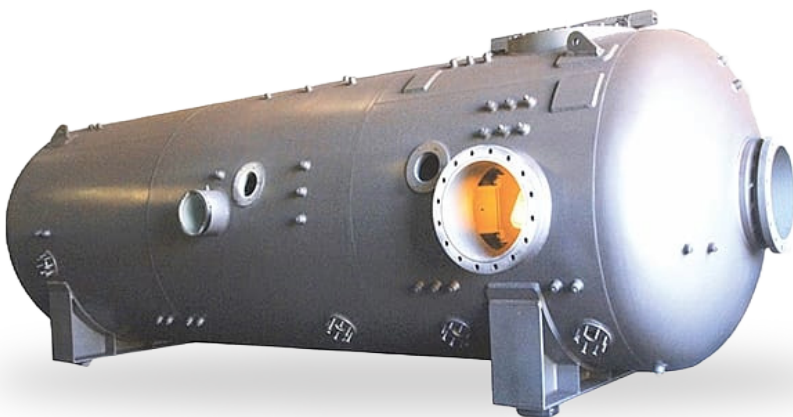
HRF Chambers / Trunks and Spools are designed and manufactured to ensure optimal safety and reliability. Constructed using premium materials with 3.1 / 3.2 MTC.



Standard	ASME BPVC VIII DIV 1 / PVHO-1-2019
Class Rules	DNV - OS - E402 / LR Rules
Material	SA 516 Gr 70 / P 355 NL1 NL2 / SA 106 GR B / SA 333 Gr 6 / SA 105 / SA 350 LF 2 / stainless steel
Design Pressure	30.3 Bar G
Temp	-10 to 55 Deg C
Dimensions	I/D 2100 X OAL 11000 MM
Manway	750 MM DIA 350 LF2 Forging with SS Overlay
Medical Lock	SA 182 F 316L
View Port	150MM - 5 Nos
Weight	29000 Kg Approx
Certifications	U Stamp , DNV / LR CLASS
Surface Finish	3 Coat Marine Epoxy System suitable to PVHO

Pressure Vessels

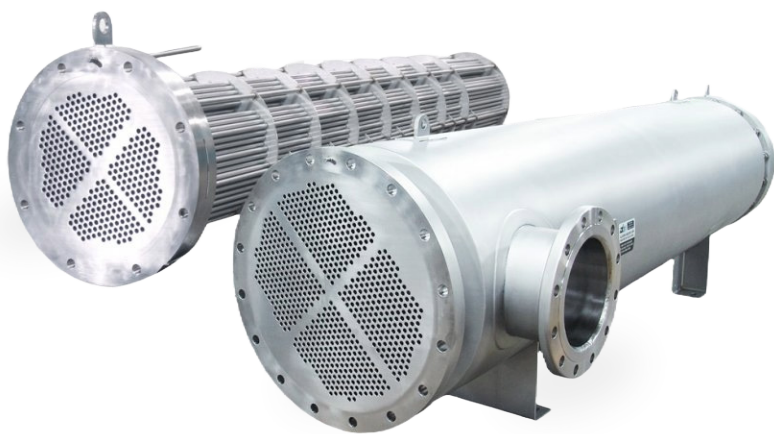
Our pressure vessels combine expertise and innovation to deliver reliability and safety. With a wide capacity range and top-grade materials, we offer solutions tailored to your needs.



Standard	ASME / EN / IS / PED
Material	SA 516 Gr 70 / P 355 NL1 NL2 / SA 106 GR B / SA 333 Gr 6 / SA 105 / SA 350 LF 2 / stainless steel
Design Pressure	5 Bar to 600 Bar G
Size	300 MM to 3000 MM
Weight	500 Kg to 50,000 Kg
Certifications	U Stamp, PED & Third-party Certifications
Surface Finish	Three Coat standard marine epoxy system: Pickling & Passivation / Glass Bead blast for SS

Heat Exchangers

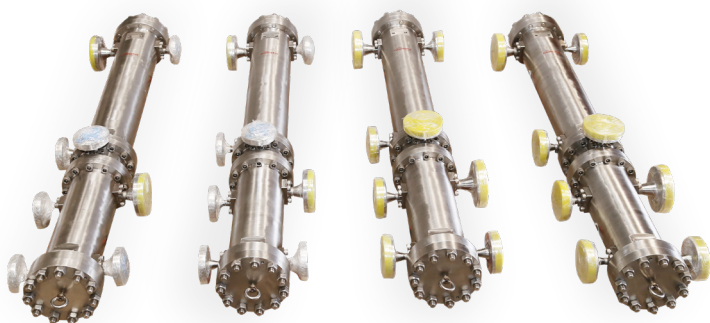
Our heat exchangers are meticulously engineered to enhance efficiency and performance, offering a versatile selection of energy-efficient options tailored to meet your precise thermal needs.



Standard	ASME BPVC SEC VIII DIV 1 / TEMA
Material	SA 516 Gr 70 / P 355 NL1 NL2 / SA 106 GR B / SA 333 Gr 6 / SA 105 / SA 350 LF 2 / stainless steel
Design Pressure	5 Bar to 500 Bar G
Size	300 MM to 3000 MM
Weight	500 Kg to 50,000 Kg
Certifications	U Stamp, PED & Third-party Certifications
Surface Finish	Three Coat standard marine epoxy system: Pickling & Passivation / Glass Bead blast for SS

High-Pressure Filter Housings

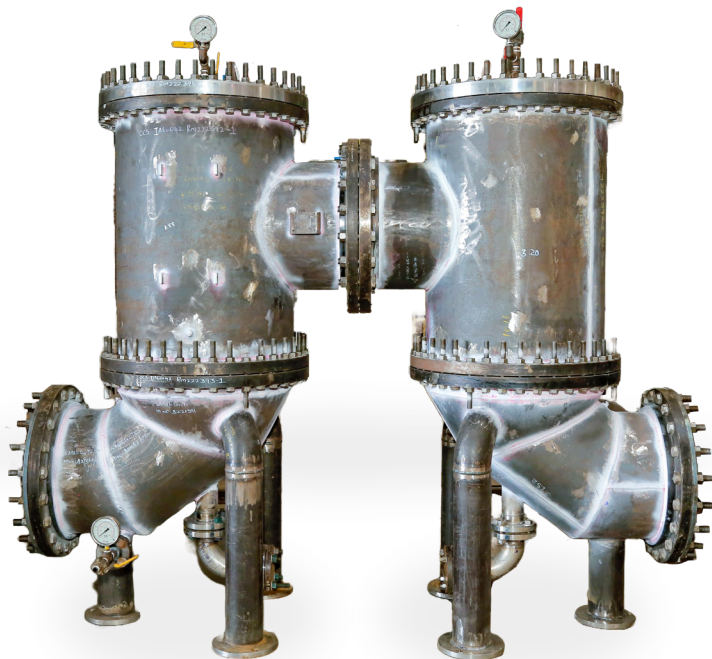
Our ASME U Stamp High-Pressure Stainless Steel Filter Housings are precision-crafted to excel in demanding applications. With a robust stainless steel build, they deliver exceptional durability and corrosion resistance. These housings meet ASME standards, ensuring safety and reliability under high pressure. Customizable to customer’s exact specifications, they fit seamlessly into your system. Our commitment to quality and compliance is reflected in the ASME U stamp. Choose our filter housings for top-tier performance and tailored solutions.



Standard	ASME BPVC SEC VIII DIV 1 ED 2021 U STAMP
Material	Stainless steel 316L
Design Pressure	315 Bar G
Test Pressure	424 Bar G
Temp	160 Deg C
Volume	10 Ltr
Dimensions	6 INCH X OAL 1678 MM
Flange Rating	2500 #
Weight	225 Kg Approx
Certifications	ASME U Stamp
Surface Finish	Polishing to Matt Finish

Medium pressure Filter Housings

Our Stainless steel and Carbon steel filter housings with/without rubber lining, are manufactured as per customer requirements. These robust housings combine the strength of steel with the protective benefits of rubber lining to ensure longevity in corrosive chemicals or abrasive substances environment.



Standard	ASME BPVC SEC VIII DIV 1
Material	Stainless steel 316 / CS with Rubber Lined
Media	Water
Design Pressure	10 Bar
Test Pressure	15 Bar
Temp	90 Deg C
Volume	500 to 1000 Ltr
Dimensions	10 Inch to 48 Inches
Weight	1000 to 5000 Kg
Certifications	ASME U Stamp
Surface Finish	Glass Bead for SS / Epoxy Coating for CS

Air Receivers

Our air receivers are engineered to meet reliable compressed air storage for various Industrial applications. Whether you need ASME U Stamp, Non-U Stamp, or CE certification, we offer a wide selection of tailored air receivers to meet your specific requirements and comply with global certification standards.



Standard	ASME Section VIII Division 1 / EN Std
Shell & Head Materials	Carbon Steel (SA516 Gr 70/IS 2062) / SS 304/316/316L
Design Pressure	10 bar(g) To 500 bar(g)
Temperature	50 Deg. C To 300 Deg. C
Head	2:1 SE Head for both Ends / Pipe Cap - as applicable
Inlet/ Outlet / Drain/PRV	1/2" NPT 3000#/ 6000# SS 304 / SS316
Gauge Point	Half Coupling 1/2"NPT
NDT	100% RT on butt welds & PT on all welds
Accessories	1 X Pressure Gauge with SS304 Needle Valve 1 X Ball Valve SS304 for Drain 1 X Non-Return Valve (Inlet) 1 X Pressure Relief Valve
Surface Finish	SA 2.5 External Blasting & 3 Coat Standard Epoxy System DFT 250 Microns External Painting

Steam / Condensate Distribution Mainfold

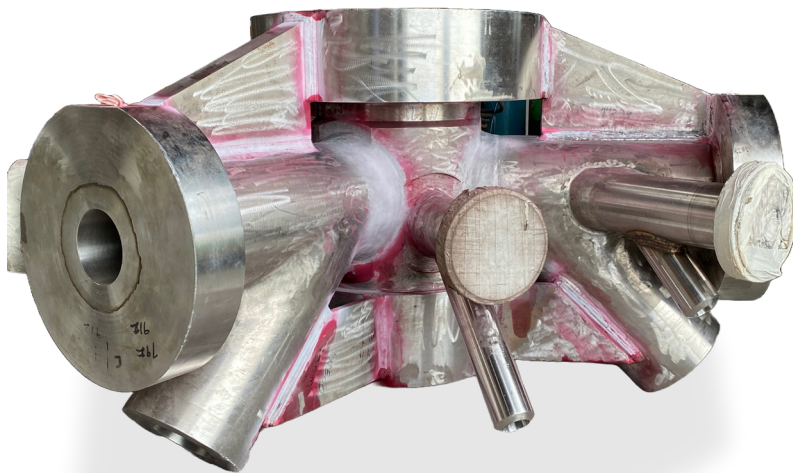
Our steam and condensate distribution manifolds are the heart of efficient thermal systems. These meticulously engineered components, designed for optimal steam and condensate control, guarantee consistent performance across a wide range of Industrial applications.



Type	4 / 6 / 8 / 12 / 16 Take Offs
Material	SA 106 GR B / SA 333 Gr 6 / SA 234 WPB / SA105 / SA 350 LF 2 / stainless steel
Design Pressure	150# to 1500 #
Size	Header - 3 Inch, Outlet - 1/2 Inch
Weight	50 to 100 Kg
Certifications	Third-party Certifications
Valves & Steam Traps	Reputed Brands
Surface Finish	Three Coat standard marine epoxy system: Pickling & Passivation for SS

Speciality Valve Body Heating Jackets

Our specialty valve body heating jackets are manufactured as per customer requirements to enhance valve performance in challenging environments. Manufactured with precision and durability, these jackets ensure optimal temperature control.



Material	SS 304L / SS 316L
Design Pressure	5 Bar to 50 bar
Size	4 Inch to 24 Inches
Weight	50 to 5000 Kg
Certifications	Third-party Certifications
Inspection	By Boroscope Camera
Surface Finish	Glass Bead Blasting External

Storage Tanks

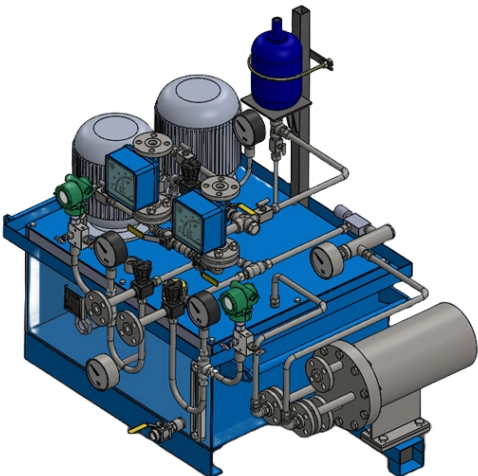
Our custom-built storage tanks in both carbon steel (CS) and stainless steel (SS) have earned the trust of diverse industries for their durability and longevity, ensuring with peace of mind.



Standard	API 650 / IS
Material	SA 516 Gr 70 / IS / P 355 NL1 NL2 / SA 106 GR B / SA 333 Gr 6 / SA 105 / SA 350 LF 2 / stainless steel
Design Pressure	Atmospheric
Size	1000 MM to 10,000 MM
Weight	500 Kg to 100,000 Kg
Certifications	Third-party Certifications
Surface Finish	Three Coat standard marine epoxy system: Pickling & Passivation for SS

API Plan Skid Solutions

We excel in the production of API Plan Skids, Coolers, and Piping, precisely tailored to your specifications and drawings. Whether it's API Plan Skids to manage fluids, cooling systems for heat exchange, or intricate piping solutions, we turn your vision into reality.



Standard	ASME B31.3 & Sec VIII Div 1
Material	SS 316L / Carbon Steel / Duplex / Incolloy
Media	DM Water
Design Pressure	41 Bar
Pressure	126
Cooling Water Coil	Double Coil Pipe
Certifications	ASME U Stamp
Surface Finish	Glass Bead for SS / Epoxy Coating for CS

Vertical Turbine Pump Components

Column Pipe | Discharge Head | Motor Stand | Sole Plate

We specialize in manufacturing Vertical Turbine Pump Components, such as Column Pipes, Discharge Heads, and Motor Stands, adhering to the highest industry standards and as per customer requirements for enhanced performance and durability. Our dedicated team ensures each part is fabricated and machined with meticulous precision according to customer specifications, with thorough inspection by experienced QC professionals.



Standard	ASME
Material	Stainless steel 316L / CS / Duplex
Machining	Close precise tolerances as required
Welding	40 welding procedures with international certifications
Weld Inspection	by CSWIP 3.1 Weld Inspectors
Testing	100% hydro-test as per code
Certifications	ASME U Stamp / PED
Surface Finish	Glass Bead for SS / Epoxy Coating for CS

Blending Tanks

We specialize in crafting Stainless Steel Blending Tanks to your precise specs, ensuring top-tier quality for mixing, blending, or storage needs. Our tanks, precision-built from high-quality stainless steel, cater to industries like distilleries, paper, sugar, and power generation.



Tank Type	Vertical / Horizontal
Standard	ASME / IS
Material	SS 316L / CS / Duplex
Mixing	By Agitator
Capacity	1000 Ltr to 50,000 Ltr
Surface Finish	Polished to Matt Finish, Glass Bead for SS / Epoxy Coating for CS

Turnkey Projects

In each turnkey project, our unwavering commitment to excellence, prioritizing safety and quality, is evident. We take pride in our 3rd-party certifications, guaranteeing your peace of mind and regulatory compliance, while our established track record of on-time, on-budget deliveries turn your vision into a tangible reality.

Our Expertise :

Fabrication and Erection of Plants

- Mounted modules
- Tanks & vessels
- Structures
- Equipment & Machinery
- In plant piping and associated work



Project scope:

- Project management: planning & scheduling
- Procurement
- Workshop and fabrication
- Quality assurance and control measures.
- Health, safety, and environmental standards compliance.
- Erection & Installation
 - Site Mobilization
 - Rigging & Lifting Procedures
 - Structural alignment,
 - Levelling, etc.
- Documentation and Post-Project Support

Materials	Carbon Steel and Stainless Steel
Fabrication Standards	Structures: AWS Std Piping: ASME B 31.3 Tanks & Vessels: ASME SEC VIII

Screw Conveyors

Shafted Screw | Shaftless Screw | Tubular Screw | U-Trough Screw Conveyors

Our stainless steel and carbon steel screw conveyors, equipped with housing, provide effective material handling solutions for a wide range of industries. These conveyors are manufactured as per customer requirements to handle bulk materials effortlessly, with the added benefit of protective housing, making them ideal for streamlining material transport in applications spanning food. processing, agriculture, and various industrial sectors.



Size	200 MM Dia to 1500 MM Dia
Material	CS & Stainless steel
Materials Handling	Bulk solids & Granular materials
Length & Configuration	Horizontal / Vertical
Trough & Housing Type	Tubular and U Shaped
Drive System	Motor and Gearbox with Plummer block ASSY
Surface Finish	Glass Bead for SS / Epoxy Coating for CS

Site Services

Site fabrication, erection & commissioning

At OCS, we have a dedicated team of **more than 100 people** for on-site fabrication and erection work. Our experienced team of professionals handles on-site installations, modifications, and repairs, ensuring seamless integration of our products into your new or existing infrastructure. We prioritize safety, efficiency, and timely completion of projects, enabling our clients to achieve their operational goals without disrupting your plant operation or construction site.

Erection & Installation:

Our skilled teams handle the on-site erection and installation of fabricated components. We follow industry best practices for rigging, lifting procedures, structural alignment, leveling, and more to ensure seamless integration.

Site Mobilization:

We are well-equipped to mobilize to project sites, whether they are local or international. Our logistical capabilities ensure that resources are where they are needed when they are needed.



COMMITTED THE EXCELLENCE



PHONE

0422-7154243



ADDRESS

SF.No.118 Sangothipalayam, Arasur(PO),
Coimbatore - 641 407, Tamil Nadu, India



WEB

www.ocsengineering.in

FOR BUSINESS ENQUIRIES



K.Subramanian - mani@ocsengineering.in ☎+91 735 881 0633

P.Palanisamy - palanisamy@ocsengineering.in ☎+91 936 446 6655

K.Ravikumar - rk@ocsengineering.in ☎+91 904 220 1155

For more details

